

CAMOUFLAGE



EZ BIRDBOX

INSTRUCTION MANUAL



TABLE OF CONTENTS

- What's in the box
- BirdBox structure
- Camera structure
- Battery charging
- SD card installation
- How to turn On/Off camera
- Configure the camera
- Set up with app
- Camera installation
- How to install
- Status light
- AI bird recognition
- FCC warning
- Technical specifications

LINK TO ALL LANGUAGE MANUALS



Zeskanuj kod QR, aby pobrać instrukcje we wszystkich dostępnych językach.



Scan de QR-code om handleidingen in alle beschikbare talen te downloaden.



Scannez le code QR pour télécharger les manuels dans toutes les langues disponibles.



Scannen Sie den QR-Code, um Handbücher in allen verfügbaren Sprachen herunterzuladen.



Escanea el código QR para descargar los manuales en todos los idiomas disponibles



Scan the QR code to download manuals in all languages available



Scan QR-koden for at downloade manualer på alle tilgængelige sprog.



Naskenujte QR kód a stáhněte si manuály ve všech dostupných jazycích.



Skanna QR-koden för att ladda ner manualer på alla tillgängliga språk.

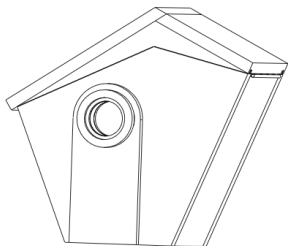


Scansiona il codice QR per scaricare i manuali in tutte le lingue disponibili

CAMOUFLAGE WEBSITE



1. What's in the Box?



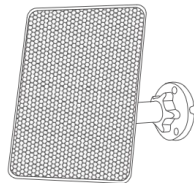
BirdBox



Wooden Mounting Plate



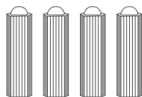
Camera



External Solar Panel



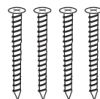
Drill Sticker



Screw Spacers x4



Wooden Rings x2



Screws for Bracket x4



Pin



Screw driver x1

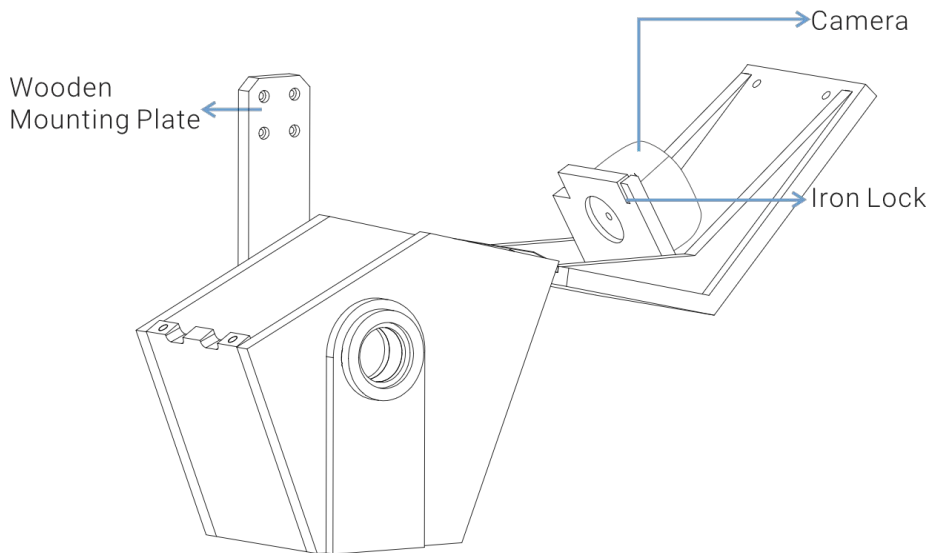


Charging cable



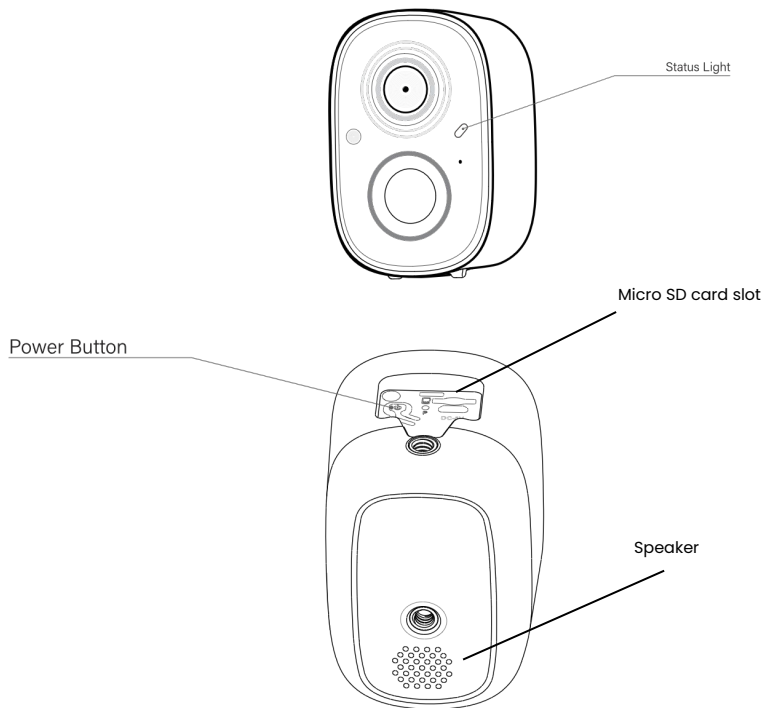
Screw for wooden Mounting plate x4

2. BirdBox Structure



Attention: Please handle this charging cable carefully to avoid damage.

3. Camera Structure



4. Battery Charging

The batteries inside the camera are not fully charged due to transportation safety regulations. Please fully charge the camera before use.

Use the provided Type-C charging cable (DC 5V/1.5A adapter not included) to charge the batteries.

The status light will be solid yellow while charging and will turn solid green when fully charged. It takes approximately 10 hours to fully charge the camera.

5. SD Card Installation

Press down the clip on the back of the camera, then push the front of the camera with your hand to slide it out from the back.

After installing the memory card, simply snap the camera back into place.

Micro SD Card Installation:

The Bird Cam has a built-in card slot that supports up to a **128GB microSD** card.

Step 1: Rotate the camera downward.

Step 2: Open the top silicone plug. Insert the Micro SD card, ensuring it is facing the correct direction.

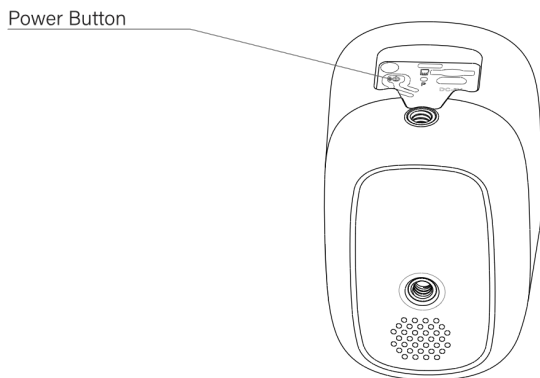
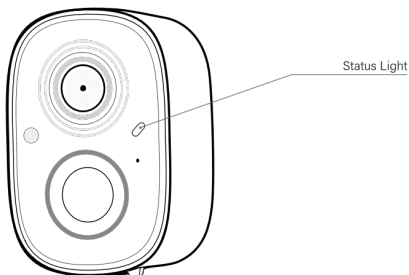
Step 3: Close the silicone plug securely.



6. How to turn On/Off Camera

To Turn On the Camera:

Press and hold the power button for 3 seconds to turn on the camera. The status light on the front of the camera will turn solid blue. Double-click the power button to enter Wi-Fi mode after hearing the prompt tone.



To Turn Off the Camera:

Press and hold the power button for 3 seconds to turn off the camera. The status light on the front of the camera will turn off.

7. Configure the Camera

To make installation easier, we will first complete the camera setup.

Note:

- The Bird Feeder Cam only supports 2.4GHz Wi-Fi.
- Bright lights may interfere with the device's ability to scan the QR code.
- Avoid placing the device behind furniture or near microwave ovens.
- Keep it within range of your Wi-Fi signal for optimal performance.

8. Set up with app



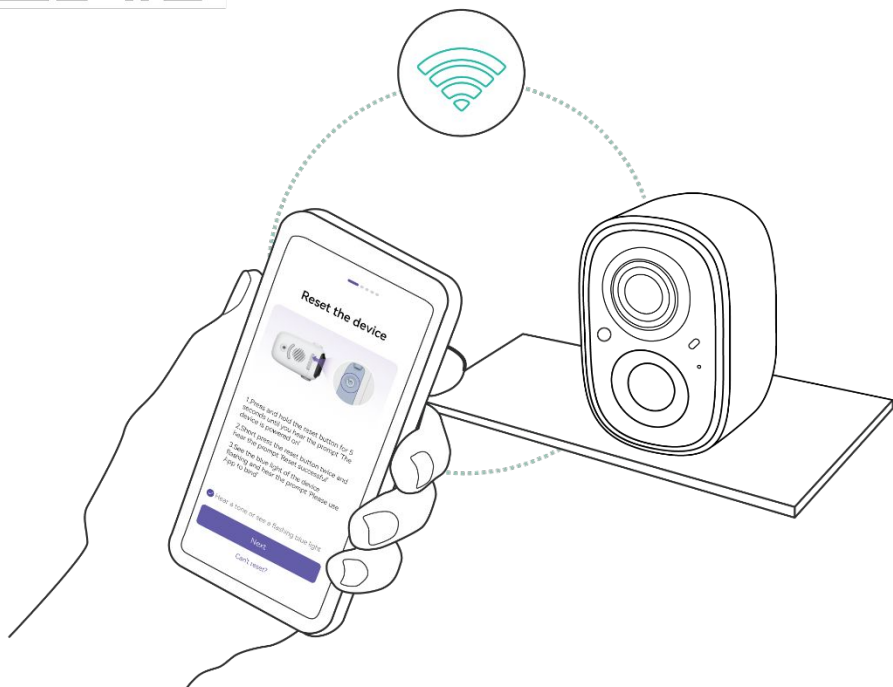
Download the app from the App Store or Google Play.
Follow the in-app instructions to complete the setup process.



Android
Download



App Store
Download



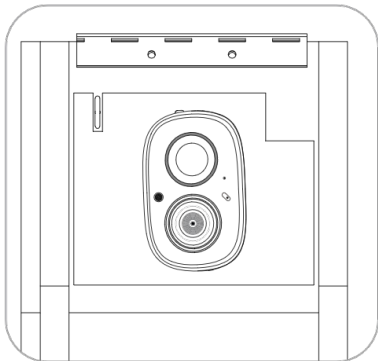
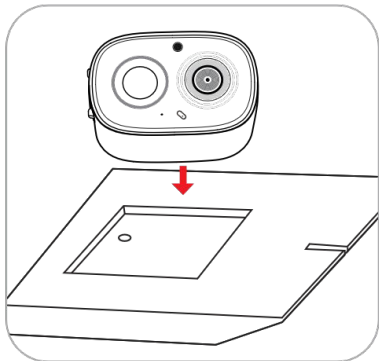
9. Power On/Off and network configuration

- Long-press the power button for 3 seconds to power the device on or off.
- Short-press the power button twice in a row to reset the device.

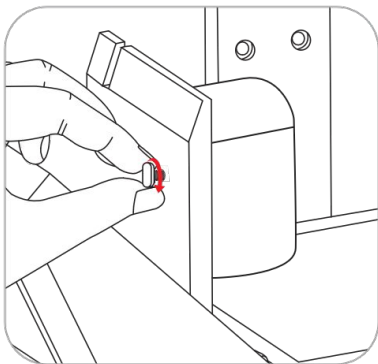
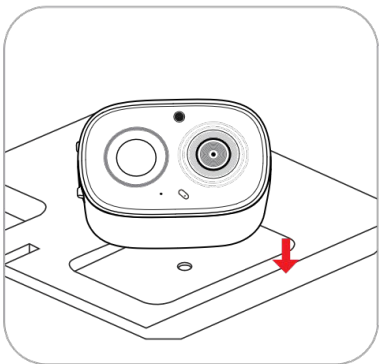
When connecting the camera for the first time, use the app and follow the on-screen instructions to configure the camera's network.

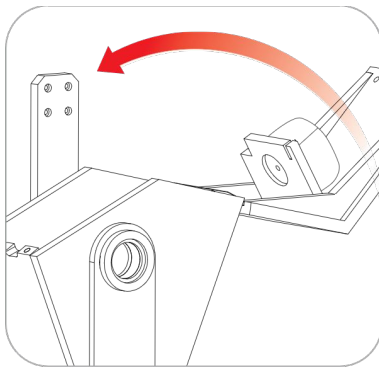
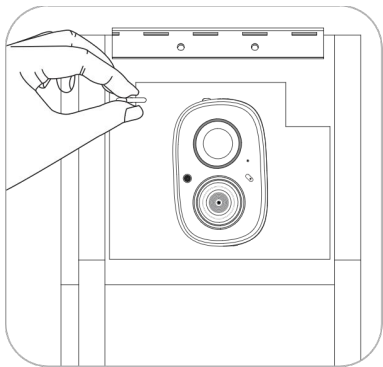
10. Camera Installation

1. The inner wooden board has a groove designed to securely hold the camera in place and keep it stable.



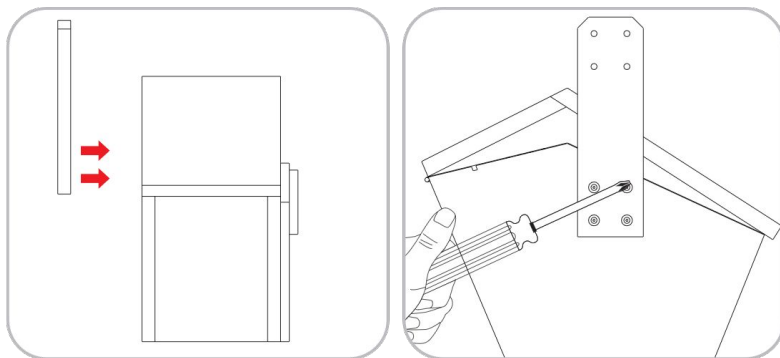
2. Align the camera's screw hole with the screw and tighten it. Rotate the iron lock, secure the wooden board, and lock it underneath the wooden roof.



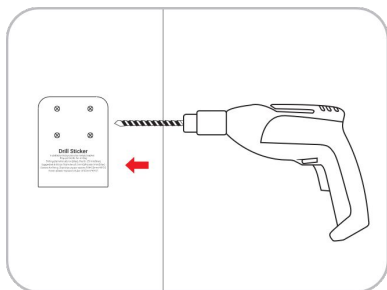


11. How to Install

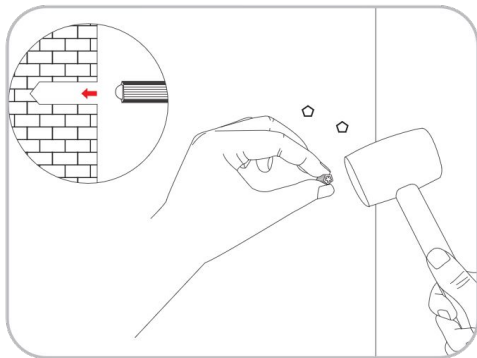
1. Use a screwdriver to fasten the screw into the board.



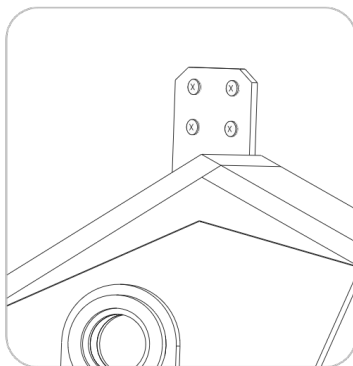
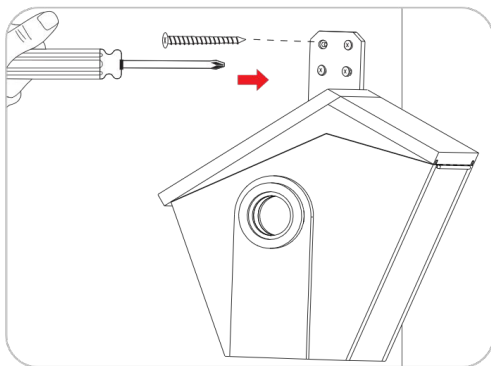
2. Stick the positioning sticker onto the wood or wall, and drill holes within the marked range on the sticker.



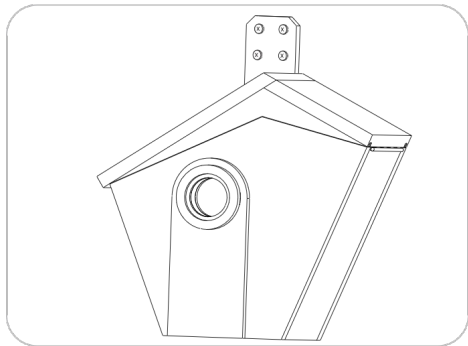
3. Insert the green plastic wall anchors into the drilled holes.



4. Secure the board using the long screws.

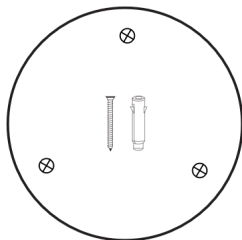


5. The **BirdBox** can now be securely mounted.

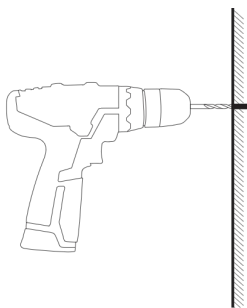


11. Installation Of Solar Panels

Choose an appropriate position to install the solar panel, ensuring it is within the length of the provided cable. Make sure the solar panel can connect properly to the bird feeder. After determining the installation position for the solar panel, attach the positioning stickers (B) to the appropriate position.

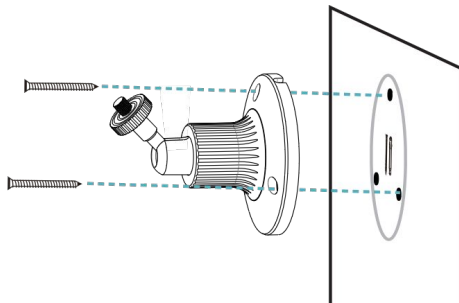


STEP 2 Using a drill, create three holes at the cross marks on the positioning stickers (B), each with a diameter of 5mm and a depth of 30mm.

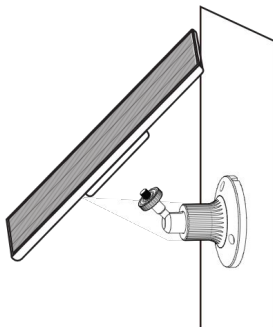


11. Installation Of Solar Panels

STEP 3 Install Solar Panel bracket at the drilled location using the M3 holder screws.



STEP 4 Install the 3W solar panel onto the solar holder.



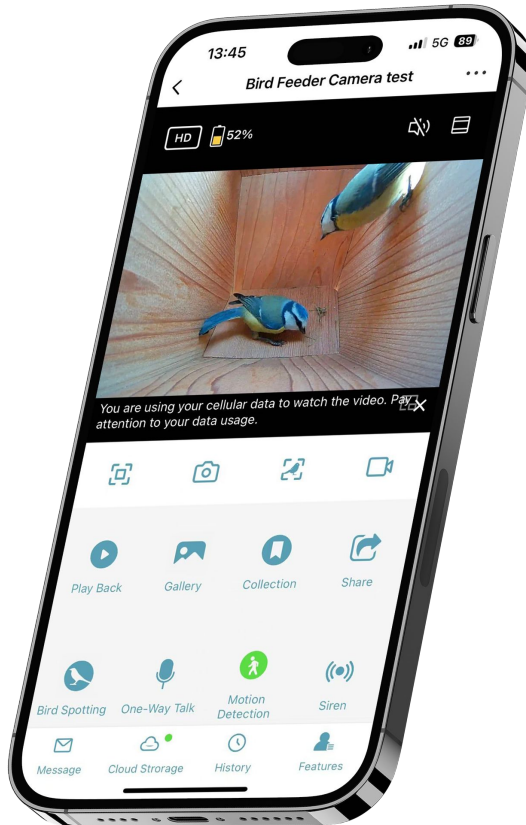
12. Status light

This camera uses a status light to communicate.

LED INDICATOR	DESCRIPTION
Solid Blue	Working
None	Sleep/Power Off
Solid Yellow	Charging
Solid Green	Charging Finished

13. AI BIRD RECOGNITION

AI Bird Recognition has undergone massive machine learning and uses AI intelligent recognition algorithms to inform you in real-time "what species of bird is coming", automatically save the bird images/video data for you, and also provide bird knowledge learning and so on.



14. FCC WARNING

This equipment has been tested and found to comply with the limits for a Class B digital device, pursuant to Part 15 of the FCC Rules. These limits are designed to provide reasonable protection against harmful interference in a residential installation. This equipment generates, uses, and can radiate radio frequency energy. If not installed and used according to the instructions, it may cause harmful interference to radio communications. However, there is no guarantee that interference will not occur in a particular installation.

If this equipment does cause harmful interference to radio or television reception—which can be determined by turning the equipment off and on—the user is encouraged to try to correct the interference by one or more of the following measures:

- Reorient or relocate the receiving antenna.
- Increase the separation between the equipment and receiver.
- Connect the equipment to an outlet on a different circuit than the one to which the receiver is connected.
- Consult the dealer or an experienced radio/TV technician for assistance.
- To ensure continued compliance, any changes or modifications not expressly approved by the party responsible for compliance may void the user's authority to operate this equipment.

Note: When connecting to a computer or peripheral device, use only shielded interface cables.

This device complies with Part 15 of the FCC Rules. Operation is subject to the following two conditions:

- This device may not cause harmful interference, and
- This device must accept any interference received, including interference that may cause undesired operation.

FCC Radiation Exposure Statement

This equipment complies with FCC radiation exposure limits set forth for an uncontrolled environment.

The device should be installed and operated with a minimum distance of 20 cm between the radiator and your body.

15. TECHNICAL SPECIFICATIONS

Specifications		
Processor	SOC	ARM
Image Sensor	Sensor	1/3" color CMOS sensor
	Lens	M12, 3.0mm, F1.8
	Viewing angle	Diagonal: 132°, Horizontal: 111°, Vertical: 53°;
	Minimum illumination	0.01Lux
Audio	Input Output	Realistic two-way voice intercom (built-in microphone and speaker)
	Audio compression method	AAC
Video	Video compression method	H.264+
	Lighting frequency	50 Hz, 60 Hz
	Image Frame Rate	15 fps
	Resolution	2560*1440
	Night vision	3 low-power infrared lamps (850nm wavelength) optional white light supplementary light

15. TECHNICAL SPECIFICATIONS

Network	Wi-Fi	2.4G WIFI(IEEE802.11b/g/n),built-in antenna
	IP Address Supported	Dynamic IP address supported
AI	Intelligent Functions	Supports bird identification, human detection, motion detection, lens occlusion and Chase away squirrels.
Alarm	Alarm Methods	Mobile APP message push, device white light flashes and alarm sound alarm.
Wake-up	Wake-up method	PIR induction alarm, remote active alarm
Video Recording	Recording Method	Alarm trigger, manual recording
	Video Storage	Cloud storage, local Micro SD card
Indicator light	LED indicator	RGB three-color light, indicating power/network information number/function status

15. TECHNICAL SPECIFICATIONS

Battery	Capacity	4400mAh
	Detachability	non-removable
	Usage time	3 months (It will vary depending on settings, usage, and ambient temperature)
	Standby Time	6 months
	Charging voltage	DV 5V+-5%/2A (Type-C)
	Charging time	10 hours
	Protection method	IP65 dustproof and waterproof; overcurrent/over discharge/overcharge/short circuit/high and low temperature charging gas protection
	Standby current	400μA (average)
	Operating current	180mA (The IR light is turned off)

15. TECHNICAL SPECIFICATIONS

Interface		
	SD card	1 pcs Micro SD card (Max support 512GB)
	Button	One power button, one restart button
networking	Empty distance	150 metres
Environment	Dustproof and waterproof	IP65
	Working environment	-20° ~ 50°C (No condensation)
	Storage environment	-20°C ~ 50° (No condensation)
Wifi Frequency	2412 MHz - 2472 MHz	

FC CE RoHS  



**DECLARATION
OF CONFORMITY**